

Offers Over £315,000

Jayman
www.jayman.co.uk

Estate Agents



Cheltenham Mews

Sutton Coldfield, B74 2UQ

Cheltenham Mews, Sutton Coldfield, B74 2UQ

Jayman offer for sale this luxury first floor two bedroom apartment at the prestigious Cheltenham Mews development on Four Oaks Road.

With two double bedrooms, master having a good sized ensuite, breakfast kitchen with fitted appliances, spacious living room with lounge and dining area, family bathroom and utility room. Two allocated parking spaces.

Entrance

Set behind electric gates and set in well maintained grounds this superb apartment is located halfway down Four Oaks road being walking distance to Sutton Park and to the shops at Mere Green.

Entering into the reception lobby, access to the first floor is either by stairs or lift.

Apartment 4

Situated on the first floor the apartment offers the following accommodation, all measurements being approximate.

Reception hallway

Spacious reception hallway with two storage / cloak cupboards and doors leading to; (from left to right)

Bathroom

Family bathroom with a suite comprising of bath with shower adjustment, wash hand basin and WC.

Bedroom 2

Double bedroom with a range of built in furniture and Juliette style balcony / window to the fore.

Breakfast Kitchen

Modern fitted kitchen with a range of storage cupboards, sink and drainer, granite work surfaces, integral dishwasher, integral fridge/ freezer, double oven, gas hob with extractor above and space for breakfast table and chairs with doors to Juliette style balcony / window to fore.

Living Room

Spacious living room comprising of both a sitting / lounge area with feature electric fireplace and separate area for dining table and chairs. With bay window to fore.

Master Bedroom

Spacious double bedroom with a range of fitted wardrobes and dressing table units, windows to rear and door to ensuite shower room.

Ensuite

With suite comprising of wash hand basin and WC and walk in double shower.

Utility / Laundry Room

With integral washer/dryer, sink and drainer and housing hot water tank in separate airing cupboard,

Outside

Two allocated parking spaces to fore with plenty of visitor spaces also.

Communal gardens to rear.

Leasehold Infomation

107 years remaining

£293 per month service charge.

£401 per annum ground rent.

Looking to sell your home?

Our dedicated team is here to make the process smooth, stress-free, and successful.

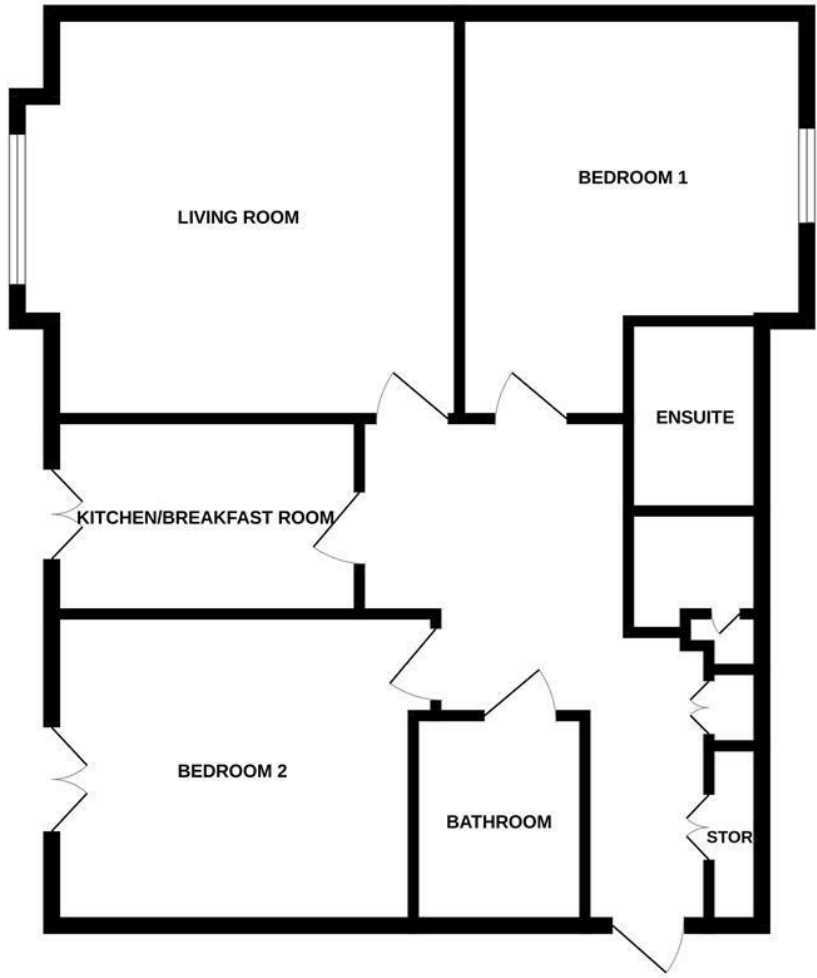
We pride ourselves on exceptional customer service, guiding you every step of the way with clear communication, expert advice, and a personalized approach tailored to your needs.

Our top priority is to help you achieve the highest possible price for your property, using strategic marketing, local market expertise, and skilled negotiation. Trust us to deliver results with care, professionalism, and your best interests at heart. For a free valuation please contact us.

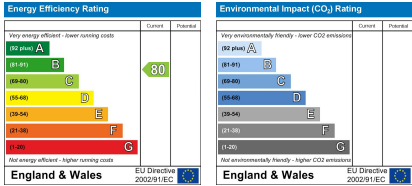
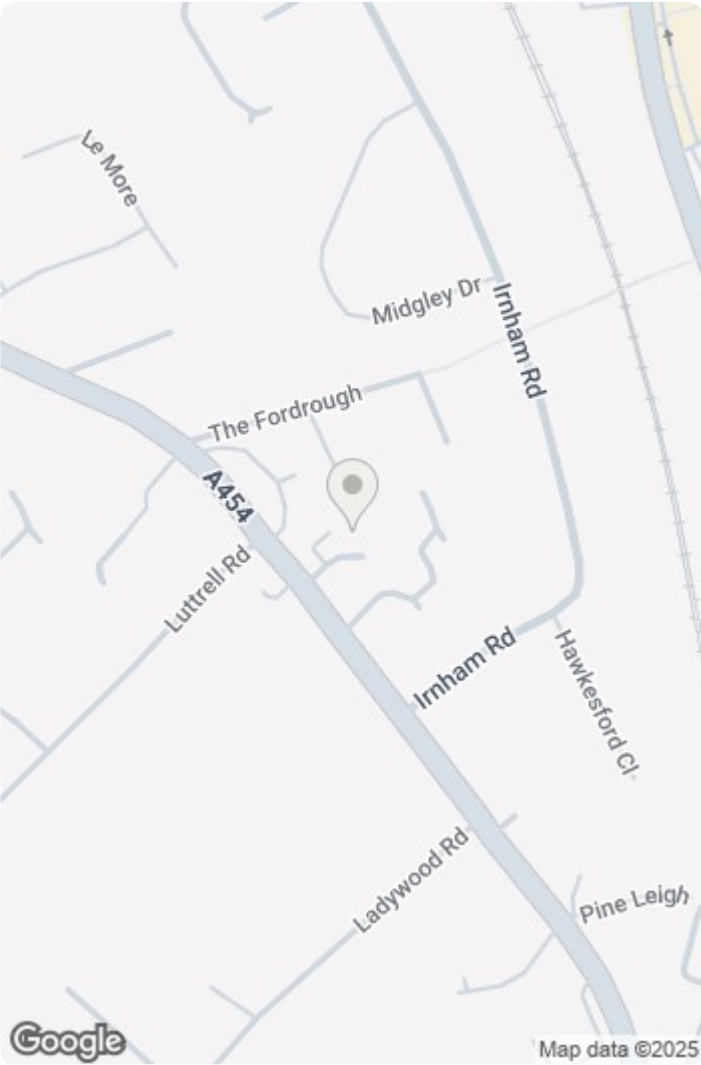


REQUIRE A MORTGAGE? Our independent advisor can compare "whole of market" to help find the best mortgage to suit your circumstances. Please call 01543 416 567 for a free mortgage quote including some deals only available through our network. **LEGAL CONVEYANCING** Jayman Conveyancing provides fast efficient low cost legal work with a no sale-no fee guarantee. Call 01543 416 567. **AGENTS DESCRIPTIONS** These details imply the opinion of the agent at the time these details were prepared and are subjective. It may be that the purchaser's opinion differs. **VIEWING ARRANGEMENTS** By appointment only with Jayman on 01543 416 567 **COUNCIL TAX** Please refer to www.voa.gov.uk for this information. **DESCRIPTIONS AND MEASUREMENTS** All measurements are approximate and some may be maximum on irregular walls. The plan shows the approximate layout of the rooms to show the inter relationship of relationship of one room to another but is not necessarily to scale. **CONSENTS** We have not had sight of any relevant building regulations, guarantees or planning consents and all relevant documentation pertaining to this property should be checked by your legal advisor before exchanging contracts.

GROUND FLOOR



Whilst every attempt has been made to ensure the accuracy of the floorplan contained here, measurements of doors, windows, rooms and any other items are approximate and no responsibility is taken for any error, omission or mis-statement. This plan is for illustrative purposes only and should be used as such by any prospective purchaser. The services, systems and appliances shown have not been tested and no guarantee as to their operability or efficiency can be given.
Made with Metropix ©2024



We endeavour to make our sales details accurate and reliable but they should not be relied on as statements or representations of fact and they do not constitute any part of an offer or contract. The seller does not make any representation or give any warranty in relation to the property and we have no authority to do so on behalf of the seller. Services, fittings and equipment referred to in the sales details have not been tested (unless otherwise stated) and no warranty can be given as to their condition. We would strongly recommend that all information, which we provide, about the property is verified by yourself or your advisers.

